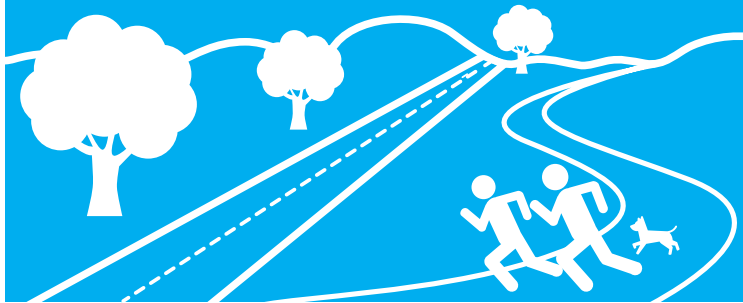


2 STATES  
7 COUNCILS  
1 REGION

# THE CENTRAL MURRAY REGIONAL TRANSPORT FORUM



## CONNECTED COMMUNITIES

### PRIORITY:

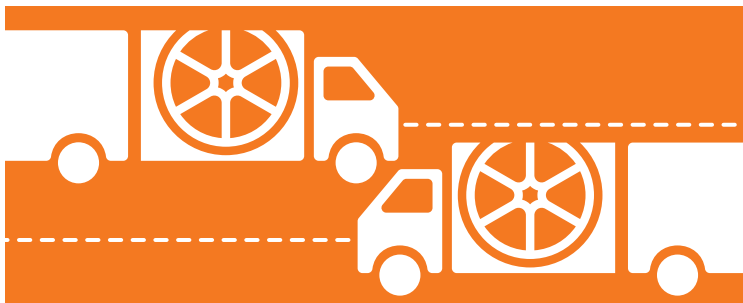
- Continue to invest in major highways to improve safety and efficiency
- Better and safer visitor access to tourism icons and experiences
- Develop tracks and trails to improve community health and grow tourism
- Standardise cross border regulations to improve freight efficiency



## FREIGHT NETWORK

### PRIORITY:

- Continue to invest in the Calder Highway as a major transport corridor between Melbourne and Mildura
- Construct a Mildura Truck Bypass to improve road safety and efficiency
- Complete a Horticulture Supply Chain Study to plan for transport network upgrades
- Support regional growth by investigating a second bridge crossing at Mildura and rail connection from Mildura to the Transcontinental Railway



## CONNECTING TO MARKETS

### PRIORITY:

- Upgrade Murray River crossings at Swan Hill and Tooleybuc to improve connectivity between Victoria and NSW
- Complete the Murray Basin Rail Project to standardise and upgrade the Murray Basin Freight Rail Network
- Define high priority road networks and prioritise upgrades
- Identify and upgrade local road access including bridges and culverts on priority transport routes



## REGIONAL GROWTH

### PRIORITY:

- Increase the frequency of daily return Swan Hill and Echuca passenger train services to five services per day, five days per week
- Complete a North West Passenger Transport Study to improve services
- Promote and invest in local transport options

The Central Murray Regional Transport Forum is an initiative of:



2 STATES  
7 COUNCILS  
1 REGION

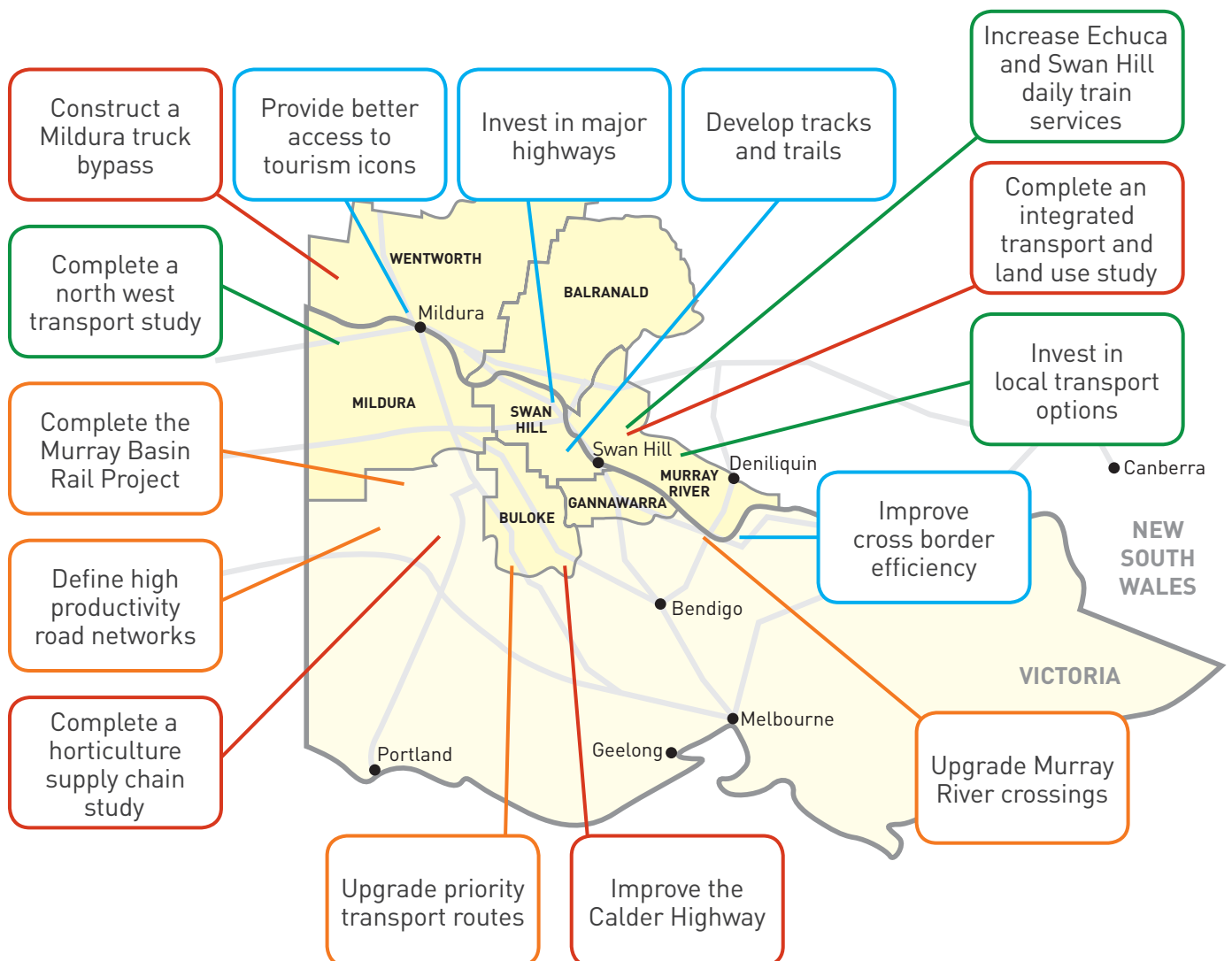
# THE CENTRAL MURRAY REGIONAL TRANSPORT FORUM

## THE CENTRAL MURRAY REGIONAL TRANSPORT FORUM

The Central Murray Regional Transport Forum (CMRTF) was established in 2010 to identify transport needs and challenges of the Sunraysia/Mallee region and advocate for improvement to the region's transport network.

Comprising councillors and senior staff from the shires of Balranald, Buloke, Gannawarra, Murray River and Wentworth, and the rural cities of Swan Hill and Mildura; the CMRTF has developed a Strategy to clarify the region's transport infrastructure needs and better position the region for the next stages of economic growth and social development.

### PRIORITY ACTIONS:



The Central Murray Regional Transport Forum is an initiative of:

