

SWAN HILL RURAL CITY NEWS

COUNCIL HIGHLIGHTS PRESENTED TO THE COMMUNITY ON THE LAST FRIDAY OF EVERY MONTH

THE END OF AN ERA AT THE PARAGON CAFÉ

We extend our heartfelt thanks to the dedicated Paragon Café volunteers for their tremendous efforts.

Volunteers have been running the café as part of their ongoing commitment for 30 years – contributing an amazing \$1.5m revenue to the Pioneer Settlement.

Café volunteers hung up their beloved aprons for the final time on Thursday, 5 August.

The dedicated group of volunteers will now ease into less demanding roles, opening up an opportunity for a new business to be established within the venue.



COMMUNITY VISION

Phase one community consultation for our Community Vision is now complete.

Thank you to over 200 community members, both young and old, who either filled out the online survey, joined in for a

community workshop or sent a postcard to their future self.

This information will be used to produce the draft Community Vision and draft Council Plan.



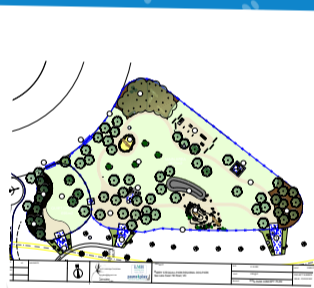
Local primary school students were asked to send a postcard from their future self to showcase how they envisage their community for the future.

PAWFECT PARK FOR POOCHES - OPENING

We are delighted to be opening our off leash Dog Park at Barry Stegall Park in Tower Hill on Monday, 30 August.



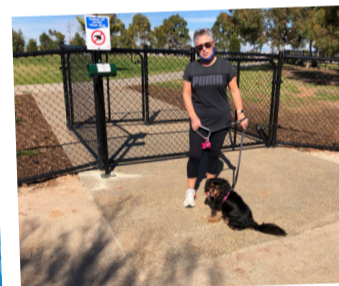
Community trial and extensive consultation.



Concepts designed.



Construction phase.



Highly anticipated by pooches and owners alike.



Tick of approval from local paw-patrol.

IN THE WORKS...



Dr Anne Webster MP recently visited to tour the facility upgrades.

AERODROME FUNDING

Upgrades to the Swan Hill Aerodrome are underway thanks to \$1.2 million in Federal Funding.

The upgrades will allow larger aircrafts to use this facility, including emergency vehicles.



LIGHTING UP THE LAKE BOGA FORESHORE

The roll out of Vibrant Village projects in our small towns has commenced.

The first project was to install solar lighting along the Lake Boga foreshore footpath, creating a safe active and leisure space for locals and visitors to enjoy.



ROBINVALE NETBALL CHANGE ROOMS

The design and color of the new Robinvale netball change rooms has been approved and construction has commenced.

VIEWING PLATFORM IN MONASH, ON THE WAY



Planning is currently underway for a River viewing platform and boardwalk south of the Yamagata Garden in Swan Hill. Detailed design works are underway. The project is being funded by Building Better Regions and Regional Development Victoria.